



Provanté
Provante Technologies, Inc.



Ams.Fleet

Product Overview





Ams.Fleet Overview

Your truck fleet is critical to your company's success and represents a significant investment. How you manage it can be a competitive advantage. Helping you get the highest return on your investment is what Ams.Fleet does.

Forget about paper forms your drivers fill out to track their loads and hours worked or calling a driver on his mobile phone to track his whereabouts and find out when he's going to arrive at your biggest customer's site. Ams.Fleet will provide you unparalleled, real-time insight into your fleet operations.



Ams.Fleet is a turnkey solution with an onboard vehicle computer; a brilliant, hi-res, touch-screen display; onboard GPS; cellular (or satellite) communications; and software that will make your operations hum and your drivers the most productive on the road.

Your drivers will enjoy using the intuitive system that speeds up their "paperwork" while keeping the scraps of paper down and that gives them a means to receive, review, and acknowledge important instructions from dispatch or the maintenance shop. Since Ams.Fleet "knows" where your drivers are at every moment, it will fill in key information in Bills of Lading or load/truck tickets, such as customer and supplier names and receipt and delivery locations – saving your drivers time and you from mistakes that are costly to find and fix after the fact.

Meanwhile, your logistics and back office users will manage your fleet from anywhere they have Internet access. Logistics will develop plans, dispatch the fleet and monitor drivers' progress against their plans; track the fleet on our interactive, street-level map; and send instant messages to the drivers for accurate and timely communication. Your back office will be freed from keying in stacks of paper forms and will enjoy Ams.Fleet's ability to auto-match vendor invoices against the electronic truck tickets your drivers create, track hours worked, and calculate driver bonus pay.

We designed Ams.Fleet from the ground up for flexibility to support the creative things your company does to remain competitive.

•
•
•
•
•
•

Ams.Fleet is composed of two major parts: the *Client* application which the driver uses and the *Manager* which is used by your Dispatch, Maintenance, and back-office personnel.

Ams.Fleet Client

The Client's Hardware

Ams.Fleet's Client runs on a multi-purpose computer designed for vehicles. Some of its features include:

- A 1.2 GHz multi-purpose processor that has the flexibility and power to run many types of applications so it can grow with your operations
- An advanced power supply that automatically powers off the computer when the truck engine is stopped to eliminate battery drain
- A bright 8" high-res, high contrast, color touch screen display that drivers use to interact with the system
- A GPS unit with an external antenna that is capable of reporting the truck's current position with an accuracy of 10 yards
- A flexible communications package that can use cellular, satellite, and/or other communications options depending on your fleet's needs and typical locations

The Client's Application

Provante designed the Ams.Fleet Client application with drivers in mind. Our user interface is intuitive and uses a "wizard" approach when appropriate. Our wizards lead the driver through the step-by-step creation of Bills of Lading or truck tickets, sending instant messages, and creating other documents that you need. We have chosen graphics that are both visually appealing and meaningful to drivers and have used them consistently throughout the application.



Some of the application features include:

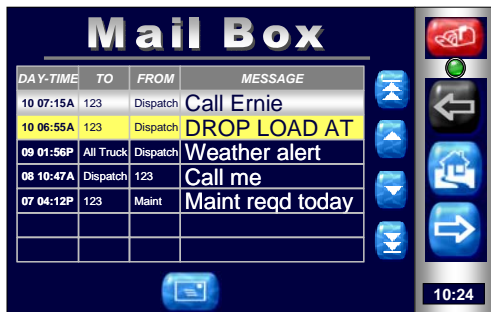
- Driver login and logout: Drivers enter their username and password to login to the Ams.Fleet client application. When they power-off the system, they are automatically logged out of the application. Ams.Fleet captures login and logout times for time reporting purposes.



- Truck ticket / Bill of Lading creation: Using a wizard that walks him through the process, your driver will create a ticket that captures pertinent information regarding the load they are transporting: the supplier, supplier's location, customer, customer's location, dates and times of pickups/drop-offs, load weight, and product hauled, for example. Because Ams.Fleet was designed to eliminate paper logs, improve data quality, and speed up your processing, we have the built in the flexibility to tailor the ticket to your company's specific requirements. So whether you are hauling sand, liquefied petroleum products, or rocket parts, Ams.Fleet will fit the bill.



- Send and receive instant messages: Ams.Fleet provides drivers with the ability to



receive messages sent by authorized Manager users, such as your Dispatcher, to respond using "canned" responses, and to create messages to be sent to Manager users. Daily schedules and plan changes are communicated using instant messages, ensuring that the driver has the latest instructions for the day.

- Record time spent on other duties: Using a wizard, Ams.Fleet will walk your drivers through a process to account for time they spent on other duties, such as driving a different, non-automated vehicle, training, etc. This information will be transmitted to our database where your Manager users can use it for driver compensation calculations, for example.
- Client integration with the onboard GPS device: to simplify the driver's life and increase the accuracy of information you get from Ams.Fleet, the Client application uses its current location, read from its GPS device, to determine the supplier location or customer location at which a load is being picked up or dropped off.

Ams.Fleet Manager

Ams.Fleet Manager is a web-based application. This means that your Dispatchers, Schedulers, Driver Managers, and back-office users can access it wherever they are as long as they have an Internet connection – even on the road if they have a laptop and a



cellular aircard! The only system requirement is that your computer accessing Ams.Fleet Manager has Microsoft's Internet Explorer version 6.0 or higher installed.

Provante hosts the Ams.Fleet Manager web site for your company at a secure, high-availability location so that you always have visibility to your fleet's current activities.

Some of Ams.Fleet Manager's features include:

- Secure login to the web site: Each user has his/her own username and password. Ams.Fleet enables you to control who has access to which functions in the system.

- Truck Ticket / Bill of Lading (BOL) review, validation, auto-matching: Truck tickets or BOLs created by drivers are collected in the system for

Supplier Ticket #	Driver	Truck	Supplier	Supplier Location	Drop Location	Product	Quantity	Unit
222	Glenn Thomas	100	Alamo Cement	Houston	Plant 6	GR58	22.22	Tons
3112	Glenn Thomas	100	Hanson	Arena	Plant 6	GR1	12.11	Tons
3232	Glenn Thomas	100	Hanson	Stafford Plant	Plant 2	SCREENINGS	34.44	Tons
33333	Glenn Thomas	100	Martin Marietta	Garwood Plant	Aggregate	GR38	22.23	Tons
99899	Glenn Thomas	144	Alamo Cement	San Antonio	Plant 3	FLYASH	29.99	Tons
998877	Glenn Thomas	142	Alamo Cement	San Antonio	Plant 1	CEMENT	22.44	Tons

review and approval by plant managers and or accounting. Incoming invoices for supplies are automatically matched with truck tickets, whenever possible to eliminate timely processes. Users can filter, sort, print, and export tickets to Excel for further analysis.

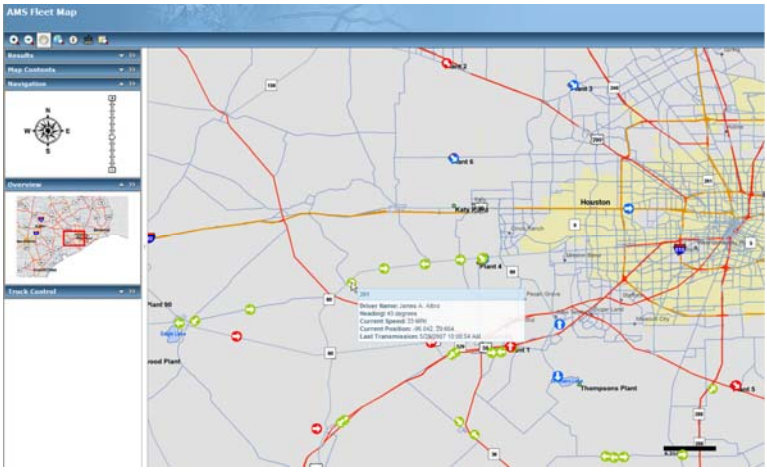
- Scheduling and Dispatch: Ams.Fleet Manager enables your dispatchers to create a daily plan for each driver or group of drivers; send the plan to the drivers so they have it in time for their shift; and send intra-day changes to the plan. Plans can be copied from one date to another and group plans can be further refined for each driver in the group.

During the day, Ams.Fleet Manager enables you to see progress against the plan on the dispatch status screen.

Plant	SAND	GR58	GR1	LS	GR58	WASH	GR58	SCRN	LS
Not Assigned	4	0	0	0	0	0	0	0	0
Plant 4	1	0	0	0	0	0	0	0	0
Plant 5	0	1	0	0	0	0	0	0	0
Plant 6	1	1	0	0	0	0	0	0	0
Total	6	2	0	0	0	0	0	0	0

Supplier	SAND	GR58	GR1	LS	GR58	WASH	GR58	SCRN	LS
Allied Aggregate / Columbia - Plant 90	0	1	0	0	0	0	0	0	0
Hanson / Arena	4	1	0	0	0	0	0	0	0
Not Assigned	2	0	0	0	0	0	0	0	0
Total	6	2	0	0	0	0	0	0	0

Group	Comment
Plant Group 1	No Sand - Plant 5
Plant Group 3	No GR58 - Martin Marietta
SAND	1 Loads
Plant Group 4	Hanson / Arena
Plant Group 5	
Plant Group 6	



- Tracking and Mapping: You determine how often your fleet vehicles send position reports. When Ams.Fleet Manager receives a position report from a vehicle, it updates the vehicle's

position on the map automatically – without you having to refresh the map. Vehicles are displayed on the map using icons with colors you choose and arrows pointing in the directions the vehicles are currently heading. Hovering over any vehicle's icon will display its driver's name, latest position, speed, and heading. Ams.Fleet empowers you to send an instant message to the driver, review his daily plan from the map, or review historical position information, too. We use state of the art ESRI mapping tools and Tele Atlas street data that is updated quarterly.

- Instant Messaging: Messaging is the backbone of the Ams.Fleet system. You will be able to send messages to any or all drivers or trucks (irrespective of driver – say, in the case of a maintenance reminder). When trucks are currently communicating with Ams.Fleet, messages are sent immediately. Ams.Fleet messages are never lost. When a truck is out of range, messages are queued up and sent as soon as the truck re-establishes communications. Ams.Fleet Manager enables you to request a “canned” acknowledgement from the driver that you have defined. *What did he say???* – all messages sent to or from the trucks are stored in the database so you can review them later.

From User	Recipient Type	To User	Device Number	Truck Number	To Group	Message Text
Ernest B Johnson	Driver	James Carter				Please call Virginia. Missing hours worked last week.
Virginia Lopez	Driver	Juan C. Anniaga				3/9 Tkt#4578218 Is this your ticket. Please enter right away.
Virginia Lopez	Driver	Daniel Harris				Is 3/7 Tkt #5124416 your ticket? Please enter if yours
Virginia Lopez	Driver	James Carter				Please enter 3/7 ticket #04577969
Virginia Lopez	Driver	Earl Muncey				Please enter 3/7 ticket #04683154
Ernest B Johnson	Driver	Michael Sanford Feland				Thanks
Michael Sanford Feland	Group				Manager	GOING HOME SICK
Virginia Lopez	Driver	Larry Frederick				Please enter 3/1 ticket #'s 04682436,04687700,04687729
Virginia Lopez	Driver	Larry Frederick				Please enter 3/1 ticket #19255220
Virginia Lopez	Driver	Kevin S. Adamson				Please enter 3/1 Ticket #'s 04687771 & 04687743
Virginia Lopez	Driver	Glenn Thomas				Please enter 2/28 ticket #12507002
Virginia Lopez	Driver	Glenn Thomas				Please enter 2/28 tkt #722013039
Virginia Lopez	Driver	Tony T. Parker				Enter 2/26 Tkt# 5123119
Virginia Lopez	Driver	Raymond Romo Jr.				Please enter 2/26 Tkt# 12020644 in your device
James Christopher Brady Jr.	Group				Accounting	CALL ME



- **Built-in Reports:** Every screen in Ams.Fleet Manager is a report that can be filtered, sorted, and exported to Excel. In addition, Provante will create custom reports that you define to focus the power of Ams.Fleet on your business needs.
- **Integration to your back-office systems:** The power of Ams.Fleet Manager lies in its ability to feed information directly into your existing systems, such as your Accounting or ERP system. We also can receive information directly from other systems you might have to further streamline ticket creation, time accounting, invoice matching, or dispatch, for example. Provante designed Ams.Fleet to be a flexible platform that we can quickly and effectively integrate into your operations to streamline the flow of information and enhance its accuracy.
- **Custom interface that fits your needs:** We designed Ams.Fleet with flexibility in mind. We built a base package that enables us to customize almost everything to meet your specific needs: from electronic forms and scheduling/dispatch methodology to labels on pages, column headings, icons, reports, and grid content.

For further information, please contact us:

Chris Noellert

VP Business Development
Provante Technologies, Inc
504 Spring Hill Dr. Suite 400
The Woodlands, TX 77386
t: 281.367.3820 x7033
f: 281.367.1833
email: chris.noellert@provante.com

Matt Goold

Account Executive
Provante Technologies
504 Spring Hill Dr. Suite 400
The Woodlands, TX 77386
t: 281.367.3820 x7072
f: 281.367.1833
email: matt.goold@provante.com